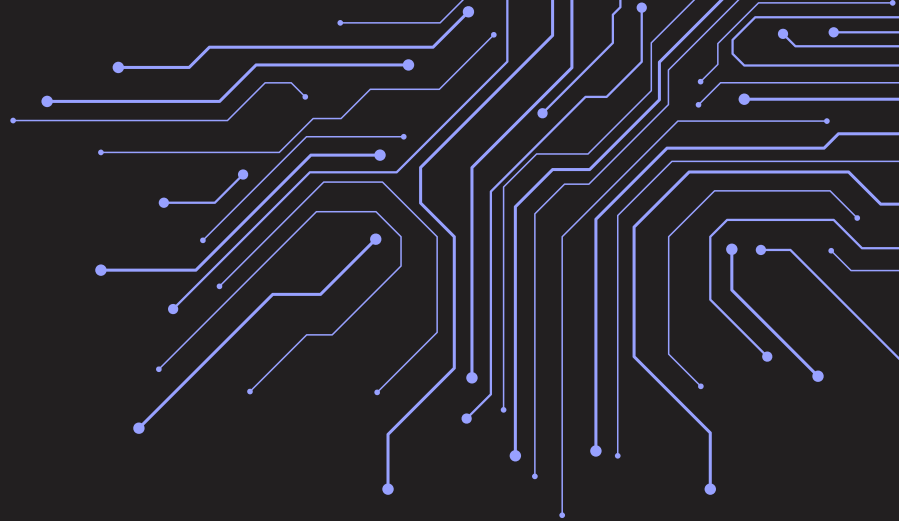


DATA CENTERS DECODED

KANSAS CITY FAST FACTS



WATER USE

Similar to an 18-hole golf course per year



NOISE LEVEL

Similar to a residential air conditioner



TRAFFIC

Comparable to a mid-size office building

10 THINGS YOU SHOULD KNOW

01 THEY WON'T MAKE YOUR UTILITY RATE WON'T GO UP

DCs pay a premium rate (higher than any other commercial customer), cover 100% of own infrastructure costs + 65% of extra utility revenue gets returned in MO.

02 KC DOESN'T HAVE A WATER ISSUE

KC Water has said it plainly: DCs will not be the cause of a water shortage or rate increase for residents. New infrastructure requires the developer to pay, not you.

03 REAL REVENUE INTO OUR SCHOOLS

DCs are contributing millions of dollars to area school districts that otherwise would depend on substantial tax increases on families.

04 GOOD-PAYING, LASTING JOBS

Multiple DCs coming online in the region creates long-term, stackable job opportunities for skilled-tradespeople, providing lifelong careers.

05 KC FIRMS WINNING GLOBAL CONTRACTS

Companies headquartered in KC are building data centers around the world, and every contract brings revenue home to KC workers, suppliers and small businesses.

06 SMALL BUSINESS BENEFITS TOO

Hundreds of workers involved in these projects eat at our restaurants, stay at our hotels, shop at our stores, quietly fueling significant in local spending across the metro.

07 DIGITAL INFRASTRUCTURE CLOSE TO HOME

When your doctor accesses your records or you pay a bill online, a DC does the work. KC data centers could be keeping your most valuable data in the U.S.

08 INVESTING IN OUR COMMUNITY

DCs across KC support community groups and nonprofits, launch workforce programs and invest in our region's lifestyle assets.

09 CLEANER + MORE EFFICIENT EVERY YEAR

The newest DCs use advanced cooling with lower water usage, 30% less energy, and they're committed to carbon-free energy goals.

10 WE GET TO SHAPE THE PARTNERSHIP

MO and KS have smart policies to attract DCs while protecting residents. We have the opportunity to provide DCs with guidance on how to strategically support KC.

