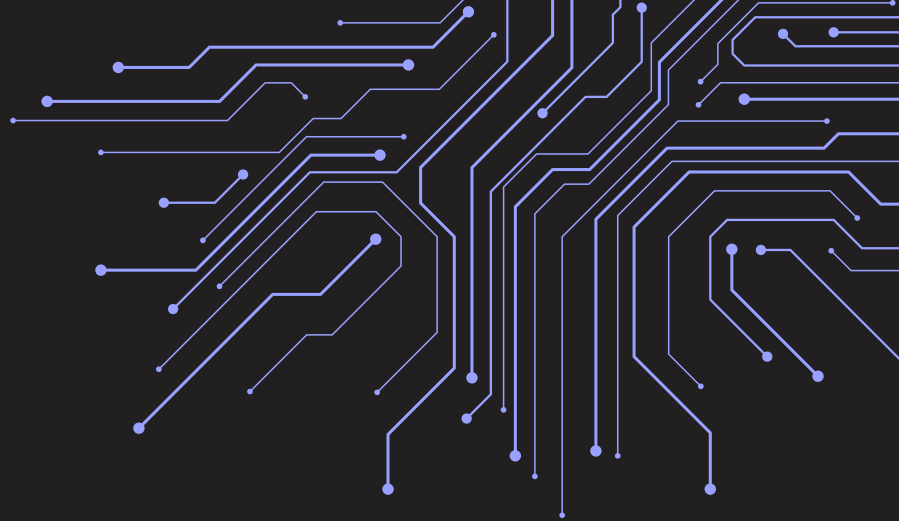


# DATA CENTERS DECODED

## KANSAS CITY FAST FACTS



### WATER USE

Typically similar to an 18-hole golf course



### NOISE LEVEL

Similar to a residential air conditioner



### TRAFFIC

Comparable to a mid-size office building

## 10 THINGS YOU SHOULD KNOW

**01 THEY WON'T MAKE YOUR ELECTRIC UTILITY RATE GO UP**  
*DCs pay a premium rate (higher than any other commercial customer), cover 100% of own infrastructure costs + sign long-term contracts with significant exit and early termination fees.*

**03 REAL REVENUE INTO OUR COMMUNITY**  
*DCs are contributing millions of dollars to area school districts that otherwise would depend on substantial tax increases on families.*

**05 KC FIRMS WINNING GLOBAL CONTRACTS**  
*Companies headquartered in KC are building data centers around the world, and every contract brings revenue home to KC workers, suppliers and small businesses.*

**07 DIGITAL INFRASTRUCTURE CLOSE TO HOME**  
*When your doctor accesses your records or you pay a bill online, a DC does the work. KC data centers could be keeping your most valuable data in the U.S.*

**09 CLEANER + MORE EFFICIENT EVERY YEAR**  
*The newest DCs use advanced cooling with lower water usage, 30% less energy, and they're committed to carbon-free energy goals.*

**02 KC DOESN'T HAVE A WATER ISSUE**  
*KC Water has said it plainly: DCs will not be the cause of a water shortage or rate increase for residents. New infrastructure requires the developer to pay, not you.*

**04 GOOD-PAYING, LASTING JOBS**  
*Multiple DCs coming online in the region creates long-term, stackable job opportunities for skilled-tradespeople, providing lifelong careers.*

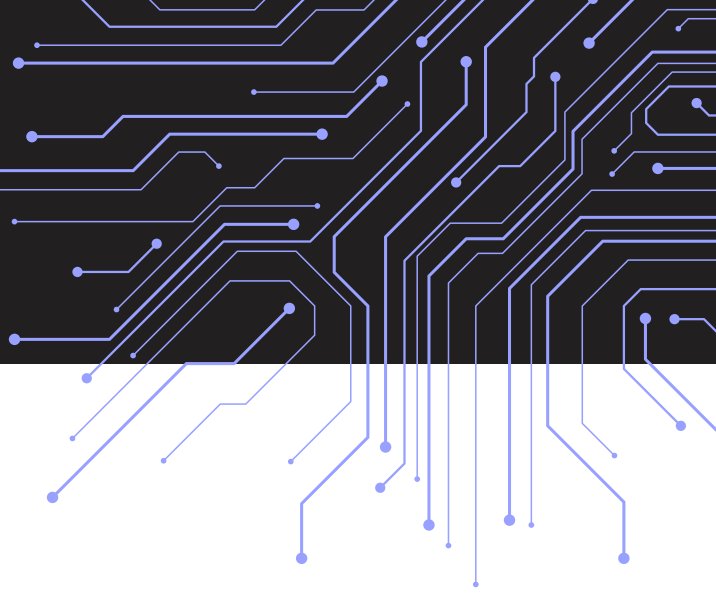
**06 SMALL BUSINESS BENEFITS TOO**  
*Hundreds of workers involved in these projects eat at our restaurants, stay at our hotels, shop at our stores, quietly fueling significant in local spending across the metro.*

**08 INVESTING IN OUR COMMUNITY**  
*DCs across KC support community groups and nonprofits, launch workforce programs and invest in our region's lifestyle assets.*

**10 WE GET TO SHAPE THE PARTNERSHIP**  
*MO and KS have smart policies to attract DCs while protecting residents. We have the opportunity to provide DCs with guidance on how to strategically support KC.*



# SOURCES & RESOURCES



## COMMUNITY

- \$1.5M to Smithville School District & funding to North Kansas City Schools, Northland Career Center and Kansas City Public School District | **Google**
- \$1M to schools and nonprofits spanning counties across KC region | **Meta**
- Launched Data Center Community Action Grants in KC | **Meta**
- Launched STAR (skilled trades and readiness program) | **Google**

## ENERGY & SUSTAINABILITY

- Large Load Power Service Order | **Kansas Corporation Commission**
- PSC Large-Load Tariff Approval | **Missouri Public Service Commission**
- 2030 sustainability goals | **Google**
- Lowering emissions | **Meta**

## EXPERTISE

- Blueprint for growth: trends shaping Kansas City's A/E/C industry: table of experts | **KC Business Journal**
- Kansas City, the center of global design and construction | **KC Area Development Council / KC Global Design**

## JOBS

- Kansas City data centers and AI flip the script on job security | **The Beacon**
- Data Centers Drive Skilled Trades Hiring Boom | **CRE Daily**
- AI boom is fueling demand for skilled trades - and demand for technicians, HVAC workers, and electricians is soaring, with six-figure salaries to match | **Fortune**

## NOISE & TRAFFIC

- Noise Comparison | (Pg. 75-76) **Data Centers in Virginia - Joint Legislative Audit & Review Commission**
- Traffic Comparison | **Data Center Knowledge**

## WATER

- *"My job is to make sure that the data center can't cause any rate increase. That's not fair, it's not just."*  
- Blake Anderson, KC Water | **FOX4**
- Water Consumption | **Data Center Coalition**

